



WBRRERA P. NOR 2025 003217

Site Address:  
Kharibari Rd, Rajarhat, Kolkata, Matiagachha,  
West Bengal 700135

Disclaimer: The images are architect's expressions and are for illustrative purposes only



Where Luxury is

*Coming Home*





through 80 ft. wide  
**Grand Entry**

Where Luxury is *Surrounded  
by nature*





Living in 72 %  
Open Space

Where Luxury is *Quality Time*





in 100,000 SQFT Podium  
& Kids Playing Area





Luxury isn't found, It's felt. In the pause, in the play,  
in the place you return to.

REIMAGINE LUXURY



Crest<sup>CAPITAL CITY</sup>

Reimagine Luxury

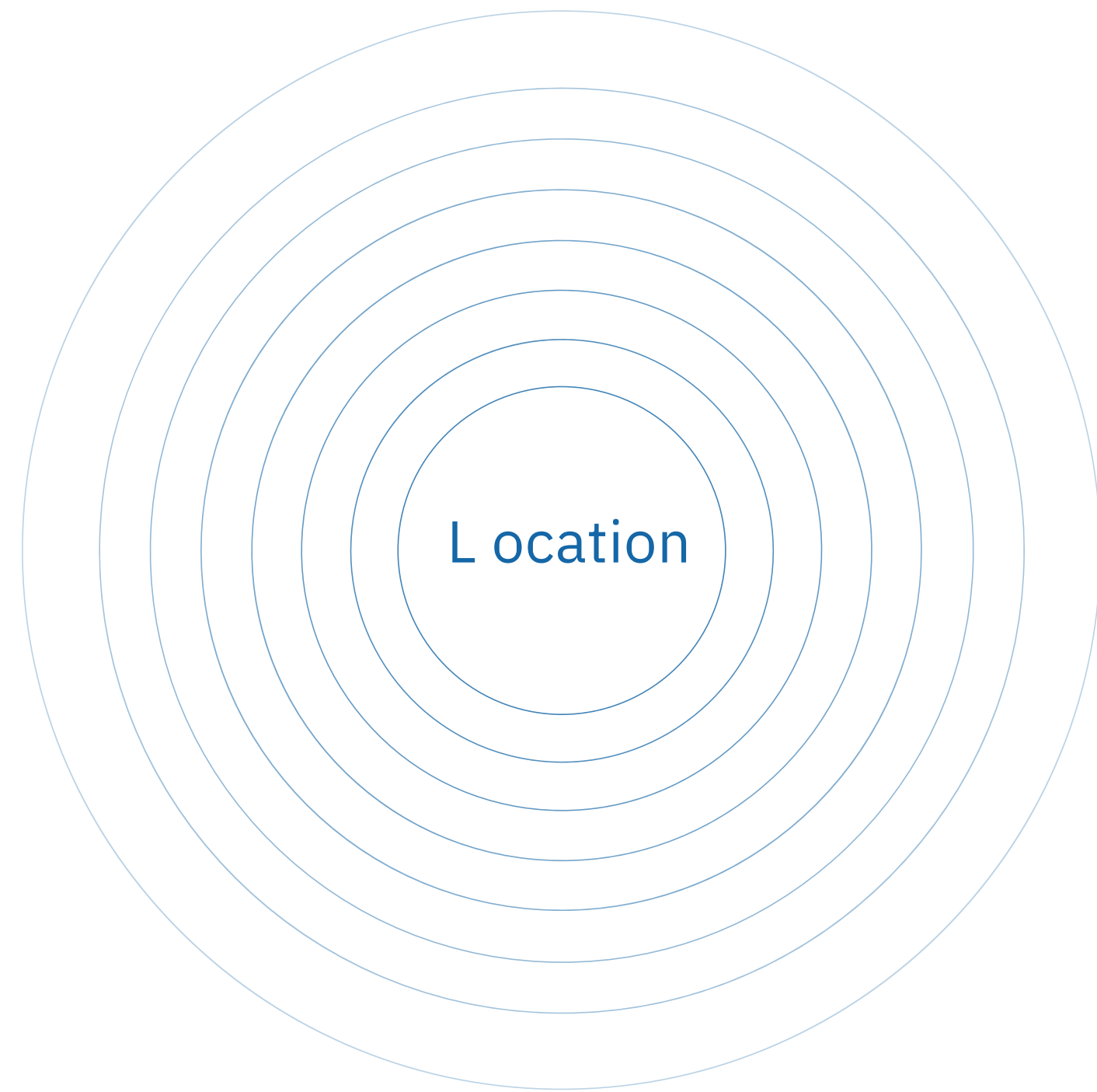


DTC Capital City stands tall as a testament to visionary planning and architectural brilliance.

Our recognition as the CREDAI Residential Project of the Year is a testament to our unwavering commitment to quality and innovation. While others follow, we lead—offering a lifestyle that is grander, greener, and truly unmatched.

Not Just an Address, A Legacy in the Making.





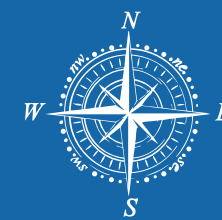
**LANDMARKS:**

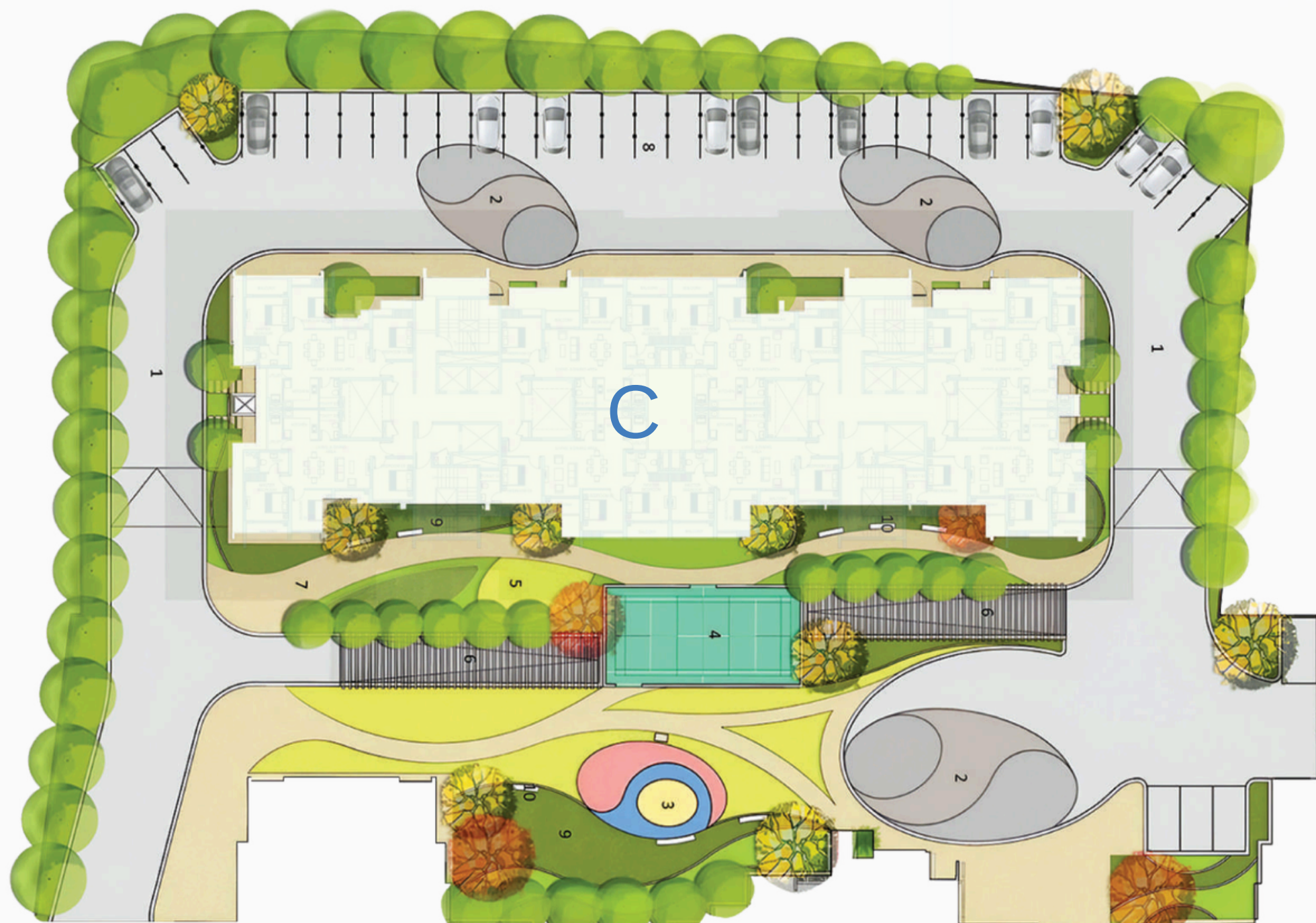
Rajarhat ApexHospital	9 mins
Lotus Hospital	12 mins
Delhi PublicSchoolMegacity	12 mins
Rajarhat Crossing	12 mins
City Centre2	19 mins
Tata ConsultancyServices	20 mins
Ecopark	23 mins

# M A S T E R P L A N

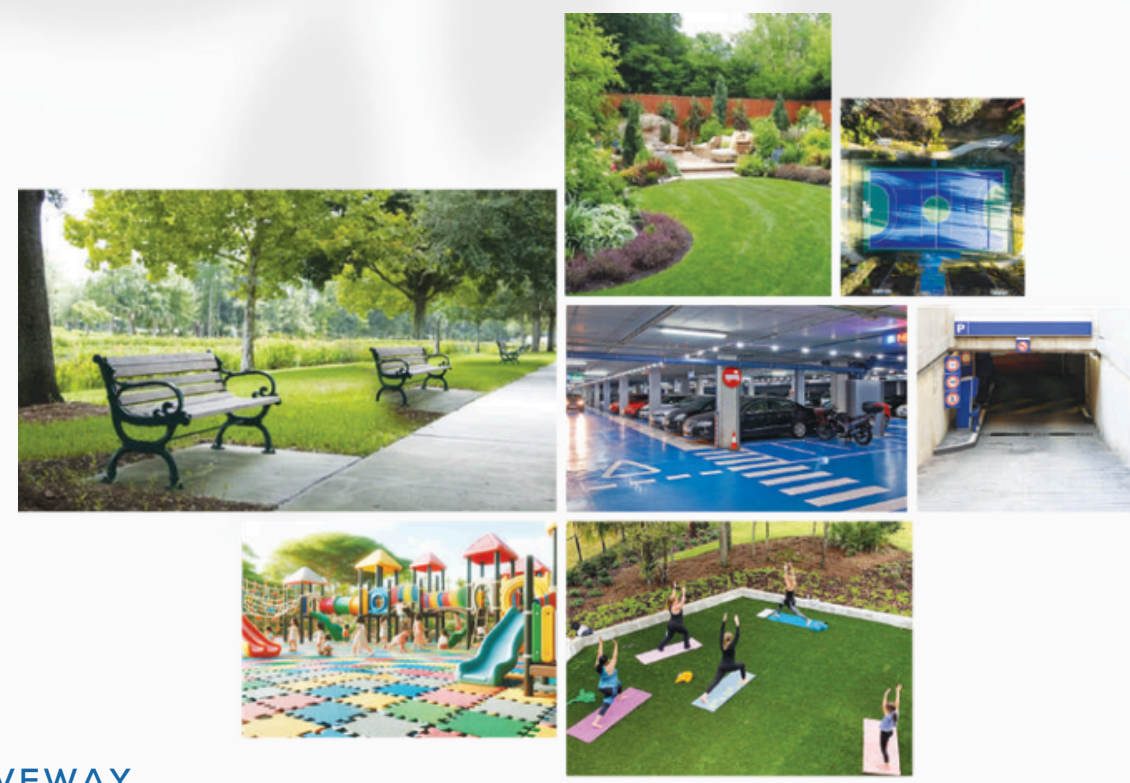
A new silhouette begins.

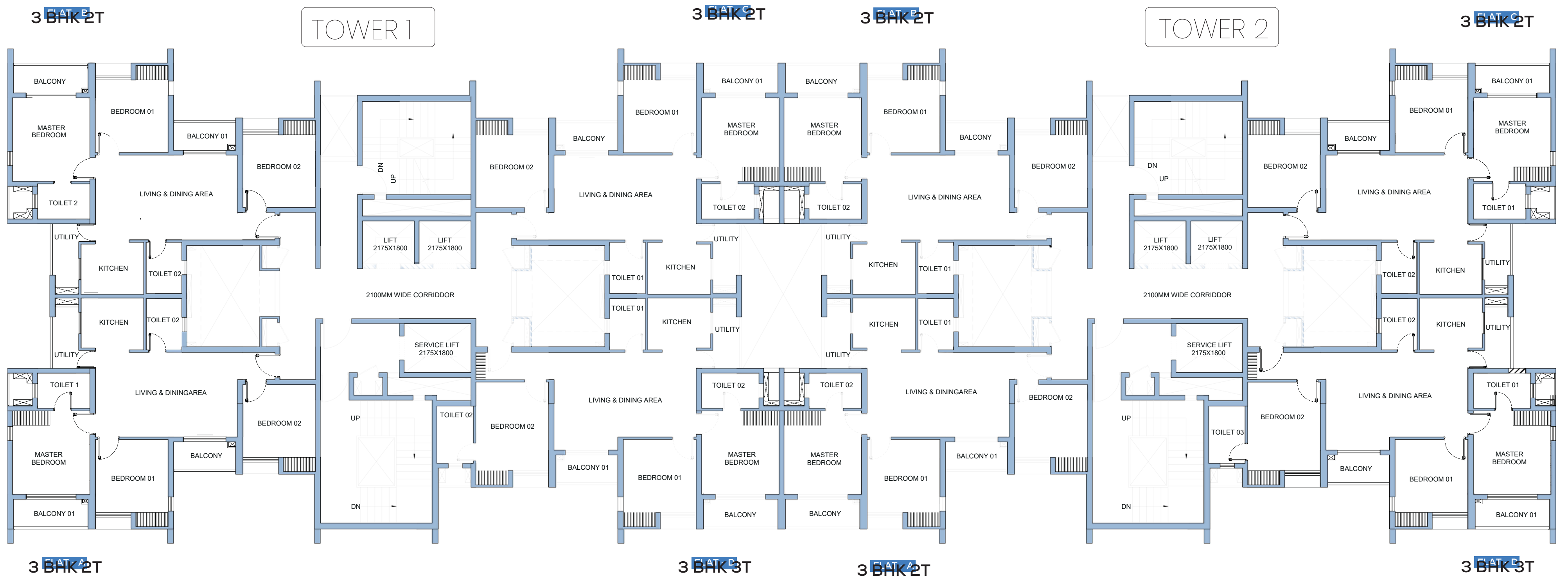
Crest rises beside DTC Capital City legacy taller, freer, and reimagined for luxury. With open spaces, lush greenery, & thoughtful design, every detail is crafted to elevate your living experience. Here, harmony isn't just a feeling—it's a way of life.

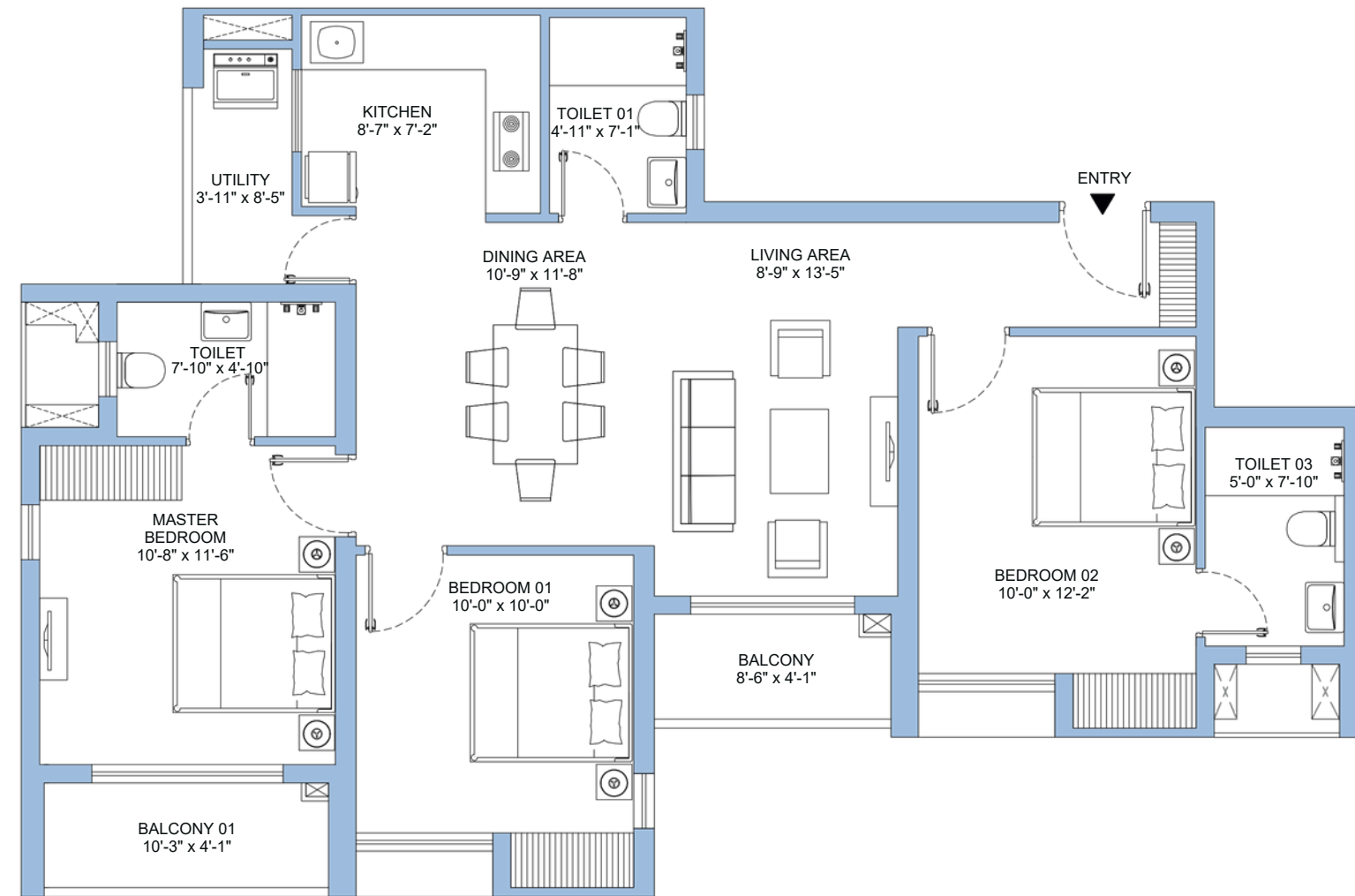




- 1. DRIVEWAY
- 2. DROP OFF
- 3. KIDS PLAY AREA
- 4. BADMINTON COURT
- 5. YOGA LAWN
- 6. BASEMENT ENTRY/EXIT
- 7. PEDESTRIAN WALKWAY
- 8. STACK PARKING
- 9. BUFFER PLANTING
- 10. SEATINGS

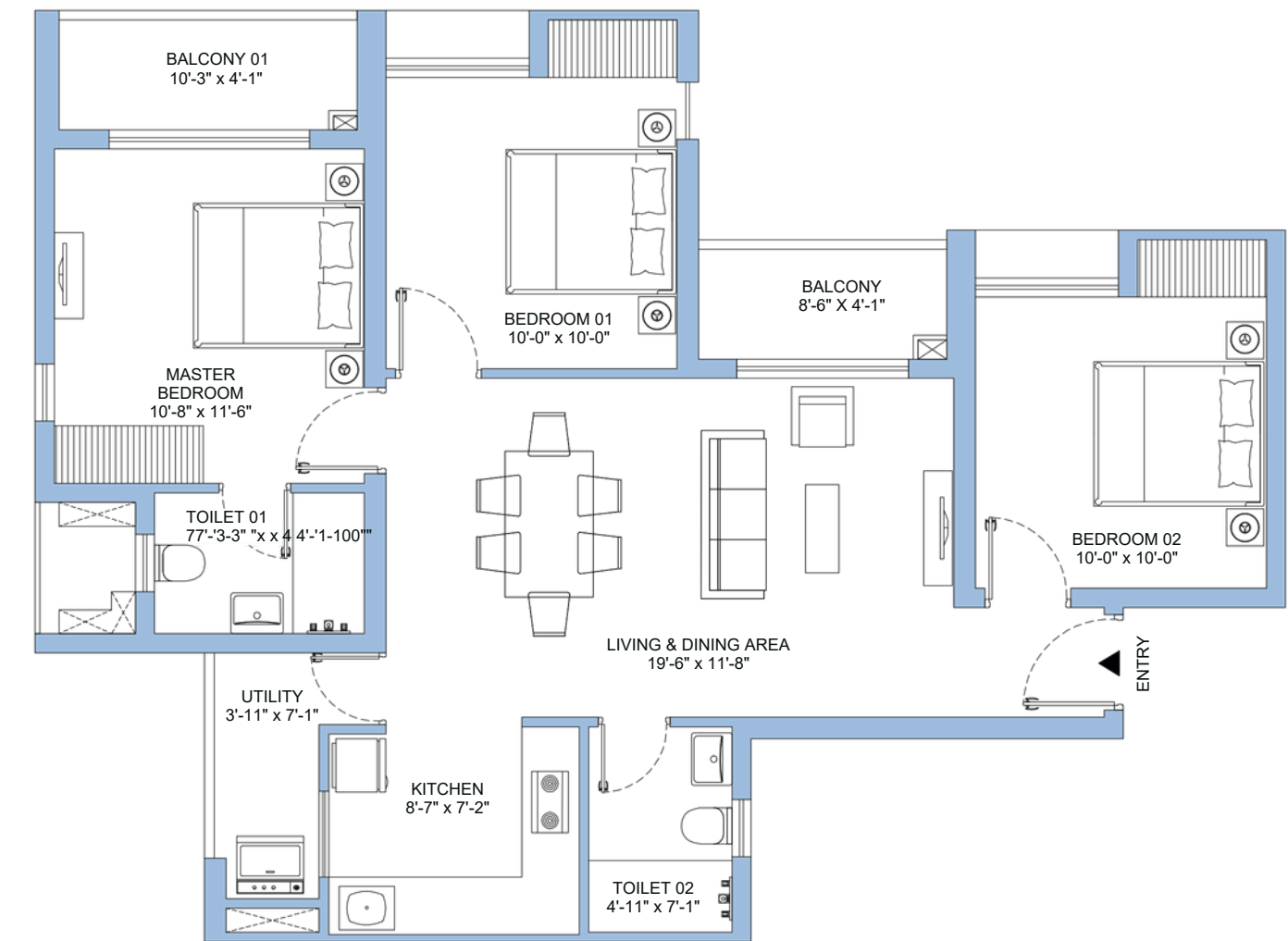






### Luxury 3Bhk<sup>3T</sup>

SBUA	BUA	CARPET AREA	WARDROBE AREA	BALCONY AREA
1445	1089	851	17	113



### Premium 3Bhk<sup>2T</sup>

SBUA	BUA	CARPET AREA	WARDROBE AREA	BALCONY AREA
1285	973	744	17	113

\*Measurement here are in SQFT

# S P E C I F I C A T I O N

## Superstructure

- Earthquake resistant R.C.C framed structure

## External finish

- Weather proof exterior paints finish

## Master Bedroom

- Flooring: Vitrified tiles
- Walls: Putty punning

## Other Bedroom

- Flooring: Vitrified tiles
- Walls: Putty punning

## Living/Dining Room

- Flooring: Vitrified tiles
- Walls: Putty punning

## Kitchen

- Flooring: Anti-skid tiles
- Dado: Dado of Ceramic tile above kitchen counter up to 2 feet height.
- Walls: Putty punning
- Counter: Polished granite counter with kitchen sink and sink cock.

## Toilet

- Flooring: Anti-skid tiles
- Dado: Anti-skid tiles up to door height

## Doors & Window

- Main door: Solid core flush door with laminate finish on outside and paint finish from inside
- Internal door: Solid core flush door with paint finish on both sides
- Window: It will be powder coated

## CP & Sanitary Fittings

- EWC in toilets and basin from CERA/Jaquar/Hindware /Kohler or equivalent
- All other CP fittings are from CERA/Jaquar/Hindware /Kohler or equivalent

## Electrical

- ISI mark concealed FRLS copper wiring with modular switch of Anchor-Panasonic or equivalent make
- Adequate electrical switch and sockets in rooms with AC points in the living room & bedroom
- Points for refrigerator, water purifier, microwave/mixer grinder, exhaust fan in kitchen and points for geyser, exhaust fan along with other electrical points in toilets

## Green Initiatives

- Organic waste management
- Water efficient fixtures
- Sewage treatment plant
- Ample green space with use of native plants in the landscape
- Recycled water for gardening
- Dual Flushing system
- Low VOC materials
- Use of LED lights in common areas
- Use of Anti-skid tiles to reflect heat from the roof



True luxury isn't loud  
it whispers in every fine detail, in every thoughtful curve.

Every story has a beginning.  
Ours began over four decades ago.

From mining and infrastructure to real estate,  
DTC Group has always built more than structures  
we've created spaces people are proud to call home.

It started with Orchid Towers in Kankurgachi,  
Redefined community living  
with Southern Heights in Joka,  
and set a new benchmark for scale and vision  
with Capital City in Rajarhat.

Now, we return to something even more elevated.  
Capital City Crest a bold architectural expression  
of what it means to live luxuriously.

Twin towers that rise 24 stories above  
a landscaped podium,  
embraced by 72% open space.  
A project where precision meets poetry,  
and every detail is designed to inspire

A Project by





# CLUB ATLAS

A MEMBERSHIP TO THE LIFESTYLE  
YOUR WEEKDAYS ENVY.

SWIMMING POOL • SQUASH COURT • MINIPLEX • POOL TABLE  
TT ZONE • GAMES ROOM • BOXED CRICKET • MINI GOLF-COURT

