



**SITE:** SRCM Road, Narendra Nagar (Crossing of 91C Bus Route & 6 Lane Expressway), P.O.- Gopalpur, Rajarhat, Kolkata 700 136

**DEVELOPERS:** **ASPIRA LOHARUKA DEVELOPERS LLP**

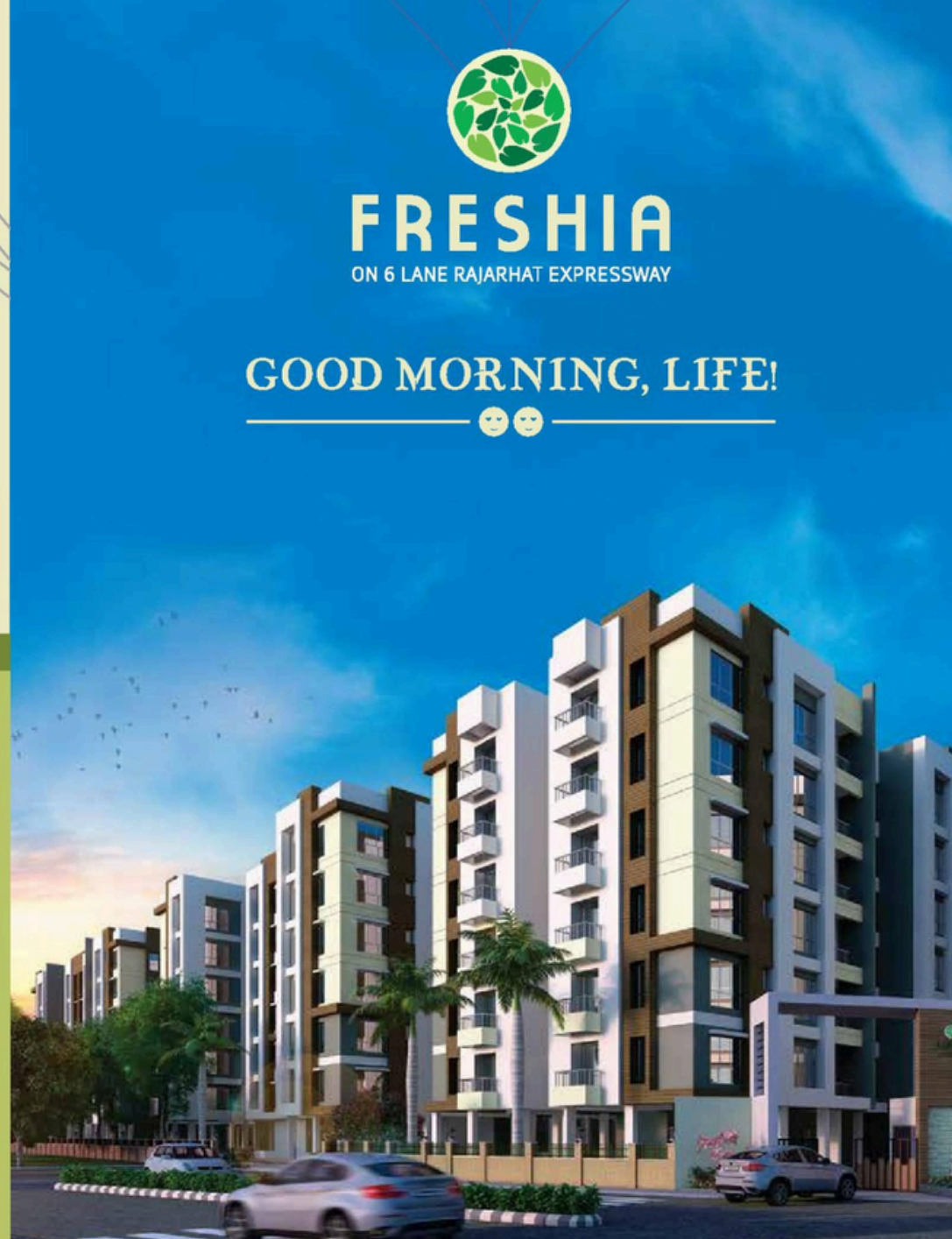


**ARCHITECT:**   
 rajagarwalassociates.com



For project details log on to: [www.thefreshia.com](http://www.thefreshia.com)

DISCLAIMER This brochure is only a conceptual presentation and not a legal offering, the details herein are tentative and subject to change at the sole discretion of the Developer without any further reference.



# FRESHIA

ON 6 LANE RAJARHAT EXPRESSWAY

## GOOD MORNING, LIFE!



The best dreams happen  
when you are awake... 😊😊

It's time to live your dream life - on your own terms.



FRESHIA



Amidst  
Greenery

8 Blocks  
of B+G+5

3 Acres  
of Land

Decorated  
Terraces

Landscaped  
Gardens

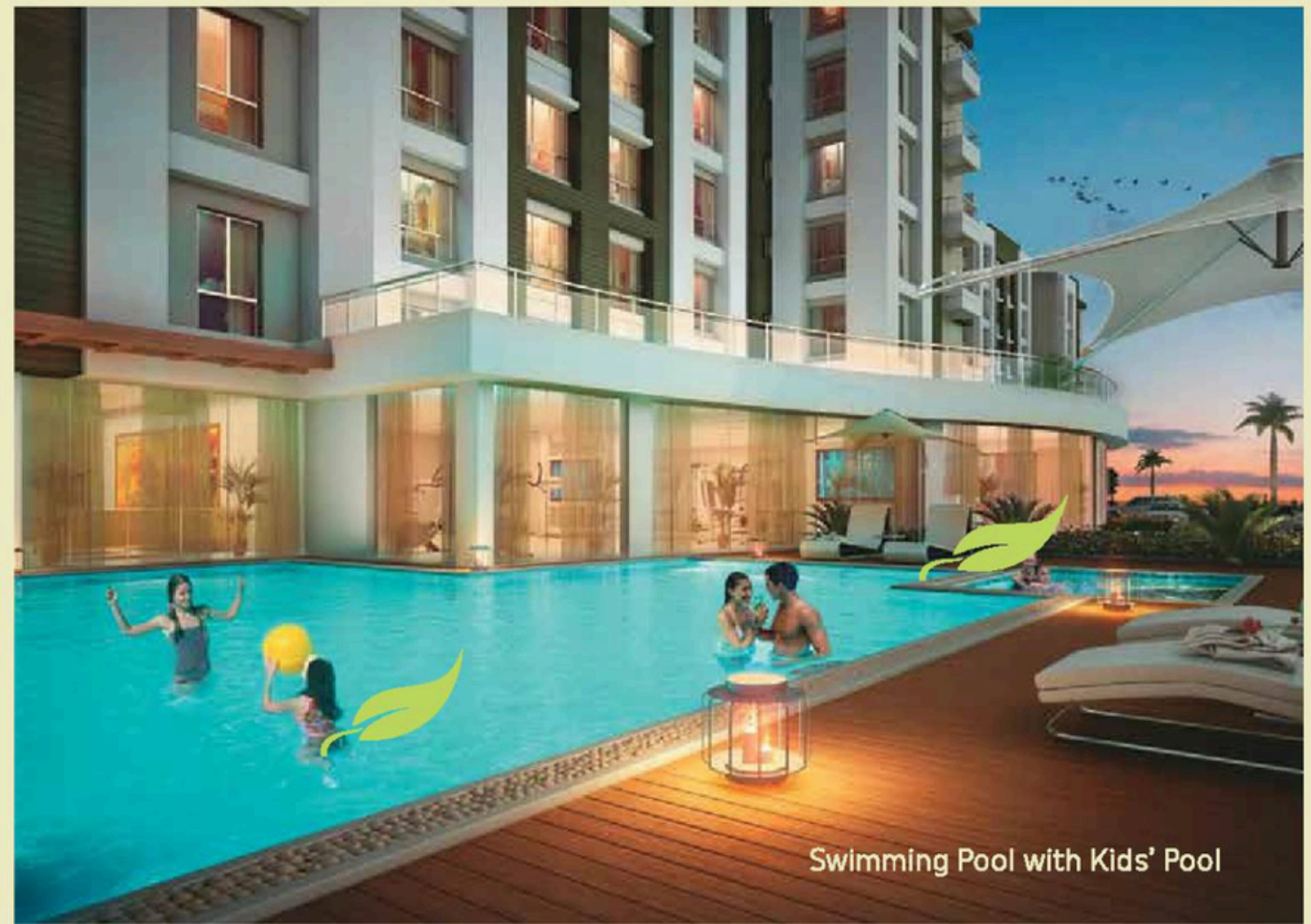
**ROOFTOP FACILITIES**

- Decorated Terraces
- Yoga & Meditation Zone
- Senior Citizen Zone
- Adda Zone





AC Community Hall



Swimming Pool with Kids' Pool



Multi-purpose Court



AC Gymnasium with Steam & Sauna



Crèche

## SPECIFICATIONS



### STRUCTURE, WALLS, BALCONY & EXTERIOR

#### STRUCTURE

RCC Superstructure

#### INTERNAL WALLS

Cement plastering overlaid with smooth, Impervious Plaster-of-Paris

#### BALCONY

Decorative MS railings up to 3 feet height

Provision for full balcony grill (as per design approved by the developer) at extra cost

Anti-skid ceramic floor tiles

#### EXTERIOR

Latest weather proof emulsion paint



### DOORS, WINDOWS & FLOORING

#### DOORS

Wooden door frame with 32mm thick flush door

#### WINDOWS

Sliding aluminium windows with large panes

#### FLOORING

Vitrified tile flooring in all bedrooms, living/dining room



### ELECTRICAL

Superior quality concealed wiring with modular switches and miniature circuit breaker

A.C. point in all bedrooms and one A.C. point in living room

One TV point in living room and one in master bedroom



### KITCHEN

Ceramic floor tiles

Granite counter top with steel sink

Ceramic tiles dado up to a height of 2 feet from the granite top

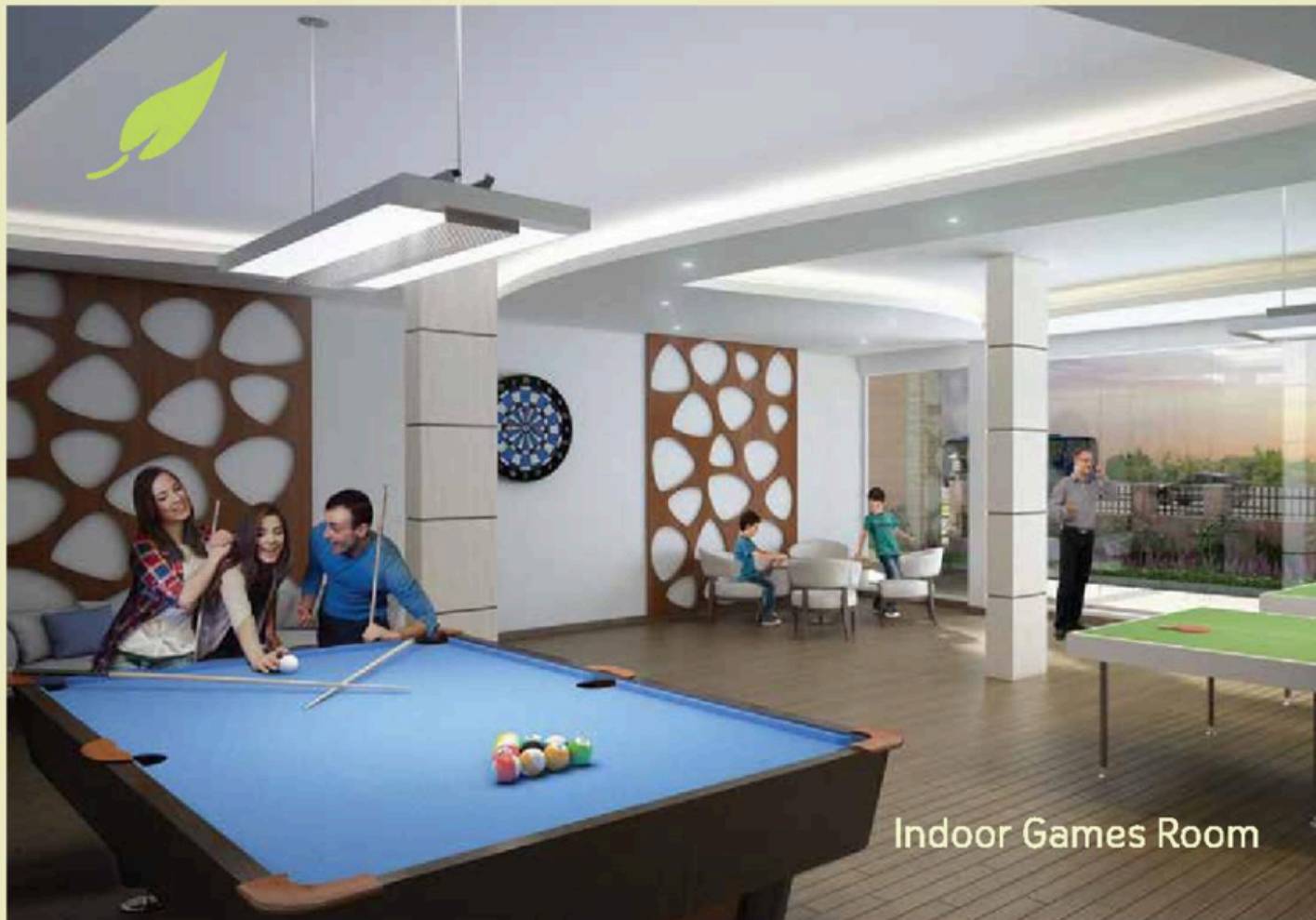


### TOILETS

Ceramic floor tile

Ceramic tiles up to door height

CP fittings and sanitary ware of Parryware / Hindware / Jaquar or equivalent make



Indoor Games Room

## FRESHANOVA - THE CLUB

Swimming Pool with Kids' Pool
AC. Gymnasium with Steam & Sauna
AC. Community Hall
Indoor Games Room
Multi-Purpose Court Badminton & Mini Cricket Practice Net
Virtual Games Room
Decorated Entrance Lobby & Lounge

## FEATURES

8 Blocks of B+G+5
50% Open Spaces
Landscaped Gardens
Mini Jogger's Track
Children's Play Area
Amphitheatre cum Festival Podium
24x7 Security with CCTV Camera
Library

# MASTER PLAN

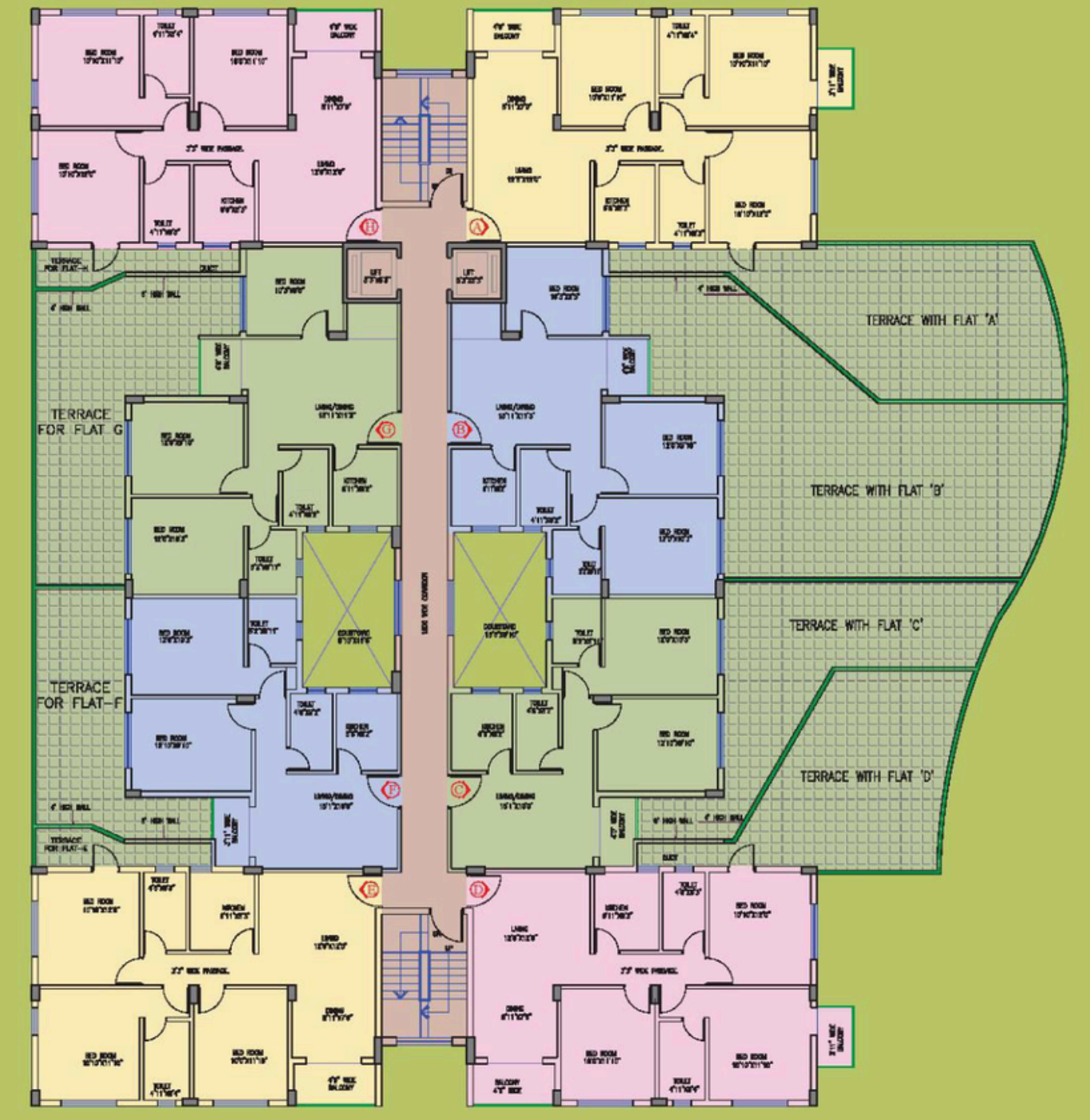
▼ N



# TYPICAL FLOOR PLAN

BLOCK 5 | ▼ N

BLOCK	FLAT No.	BHK	Built Up Area
5	A	3BHK	971
	B	3BHK	825
	C	2BHK	681
	D	3BHK	970
	E	3BHK	945
	F	2BHK	681
	G	3BHK	825
	H	3BHK	945



# TYPICAL FLOOR PLAN

BLOCK 6 | N



BLOCK	FLAT No.	BHK	Built Up Area
6	A	3BHK	847
	B	3BHK	847
	C	2BHK	769
	D	3BHK	886
	E	3BHK	870
	F	3BHK	915

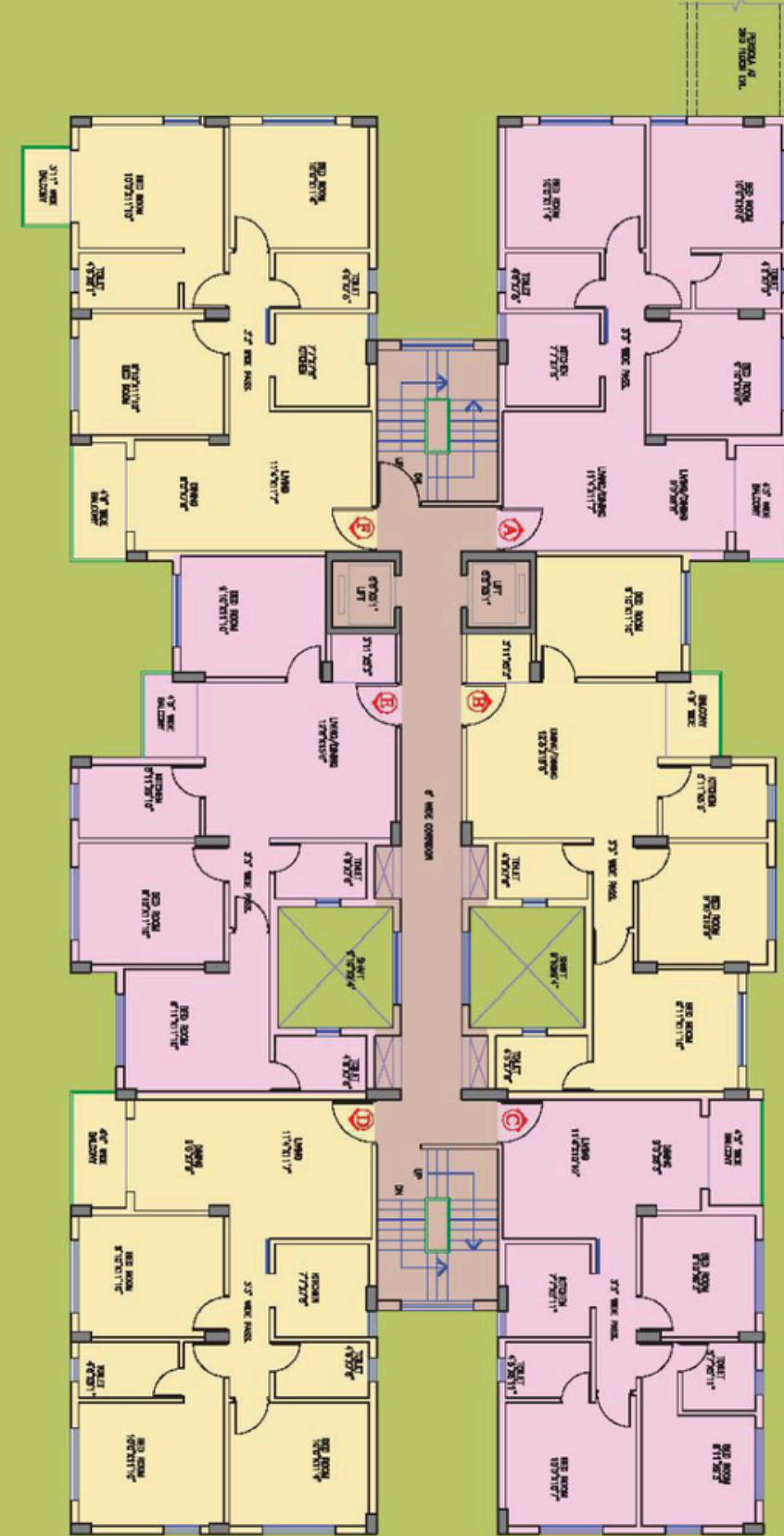


# TYPICAL FLOOR PLAN

BLOCK 7 | N

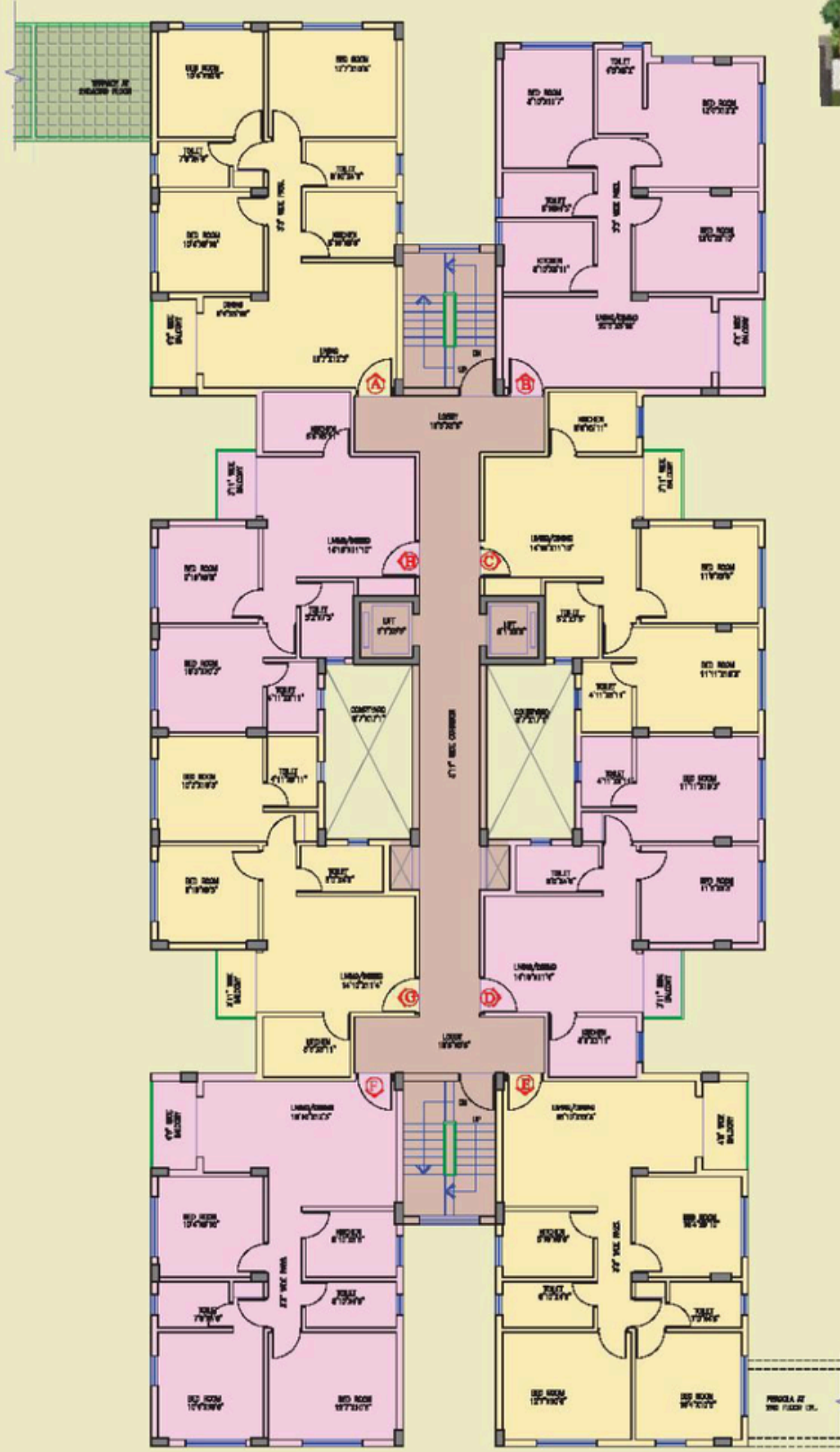


BLOCK	FLAT No.	BHK	Built Up Area
7	A	3BHK	890
	B	3BHK	884
	C	2BHK	674
	D	2BHK	664
	E	3BHK	890
	F	3BHK	890
	G	2BHK	629
	H	2BHK	640



# TYPICAL FLOOR PLAN

BLOCK 8 | N



BLOCK	FLAT No.	BHK	Built Up Area
8	A	3BHK	912
	B	3BHK	945
	C	2BHK	674
	D	2BHK	664
	E	3BHK	890
	F	3BHK	890
	G	2BHK	629
	H	2BHK	640

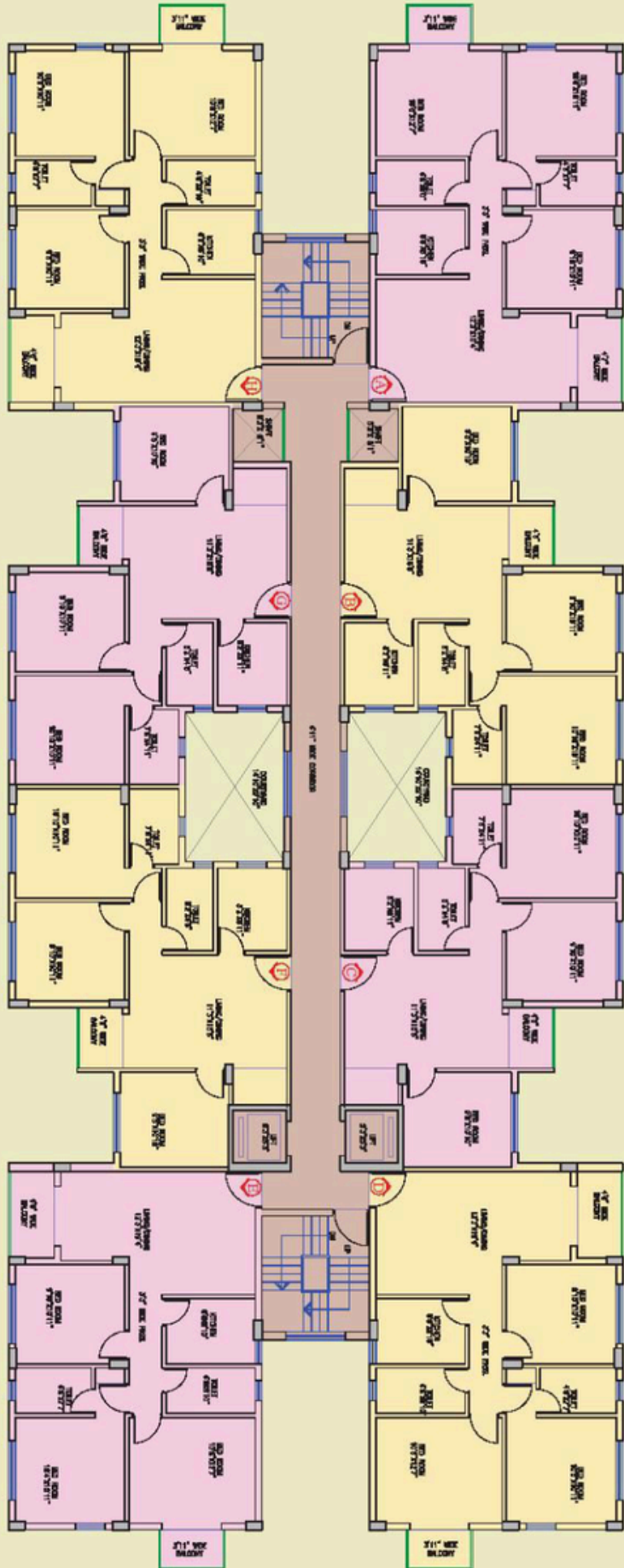
# MASTER PLAN

N



# TYPICAL FLOOR PLAN

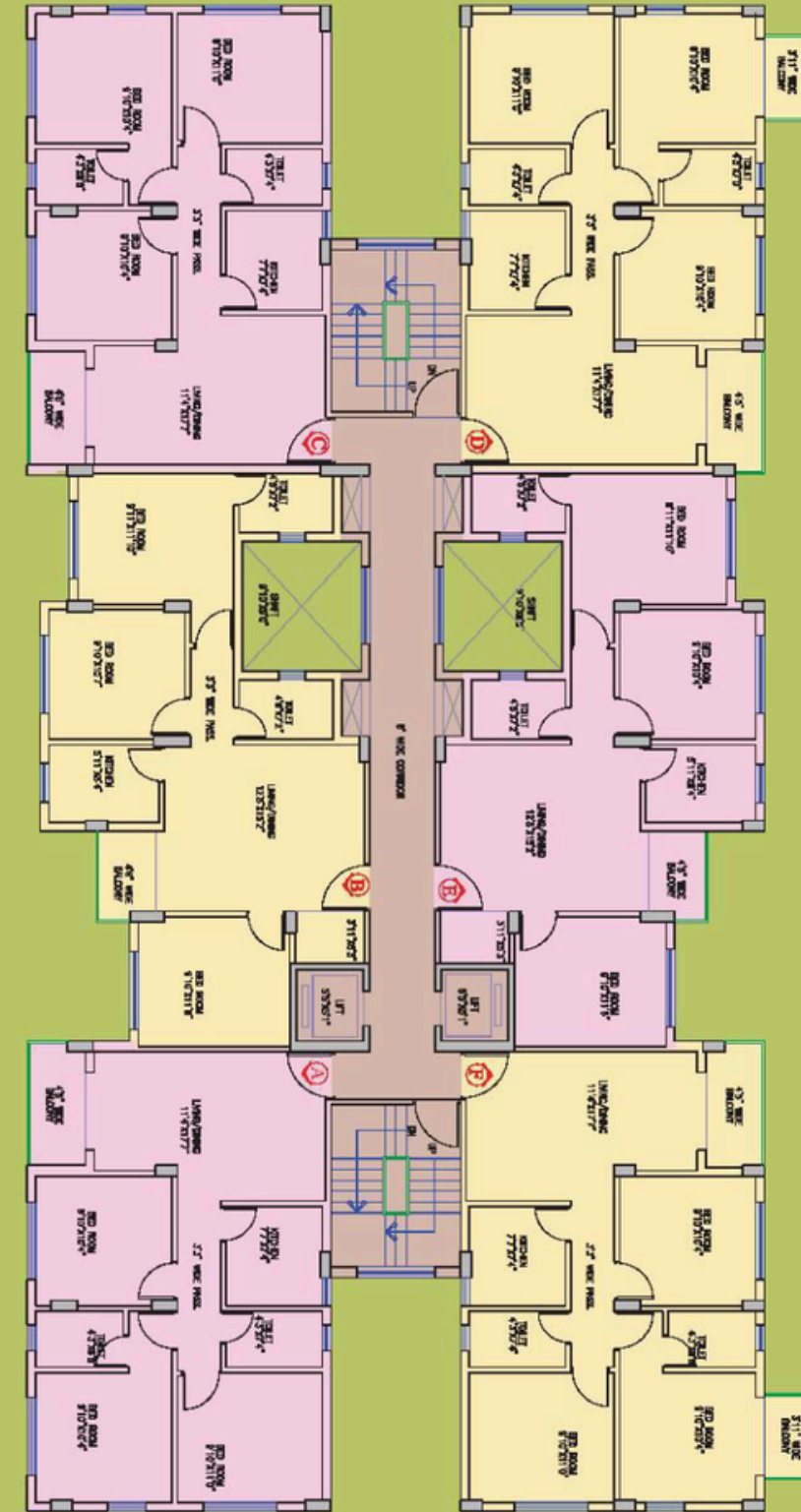
BLOCK 1 | ◀ N



BLOCK	FLAT No.	BHK	Built Up Area
1	A	3BHK	935
	B	3BHK	811
	C	3BHK	810
	D	3BHK	936
	E	3BHK	936
	F	3BHK	809
	G	3BHK	810
	H	3BHK	935

# TYPICAL FLOOR PLAN

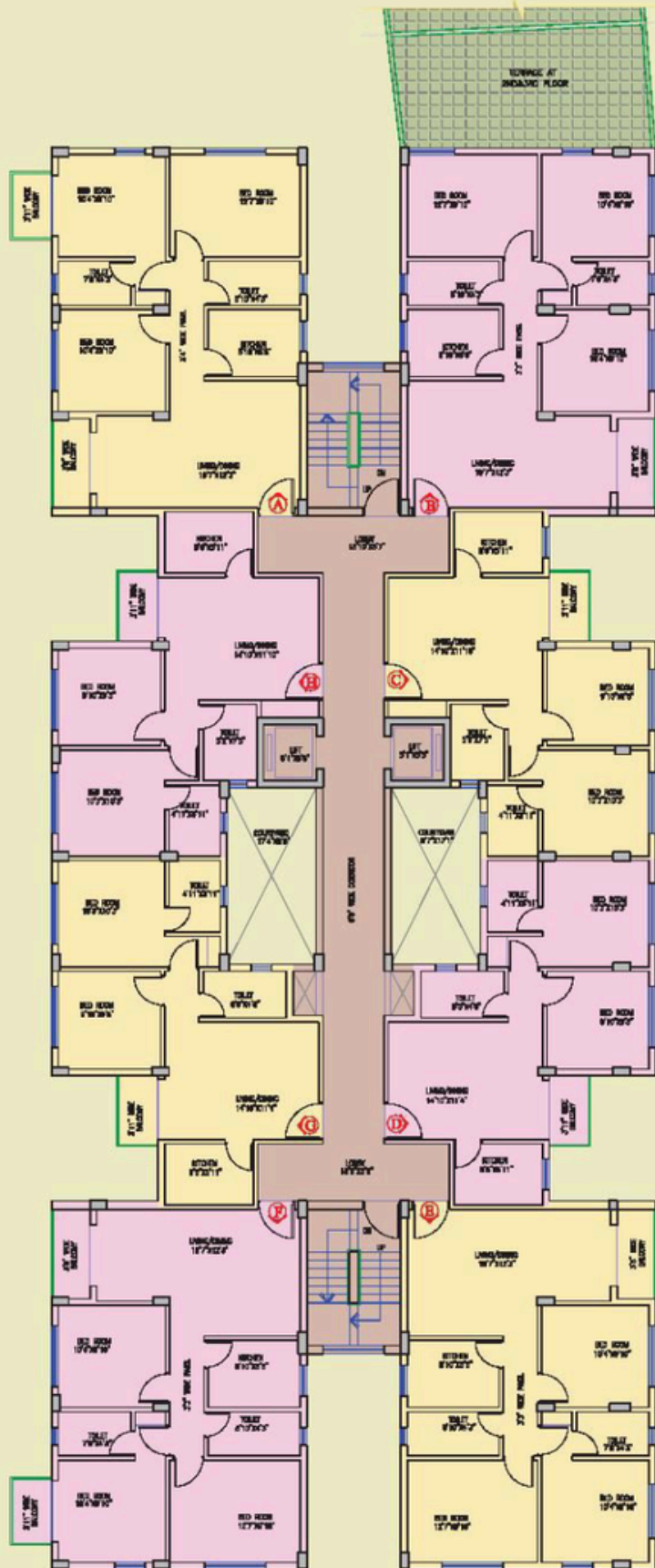
BLOCK 2 | ▼ N



BLOCK	FLAT No.	BHK	Built Up Area
2	A	3BHK	815
	B	3BHK	831
	C	3BHK	814
	D	3BHK	839
	E	3BHK	831
	F	3BHK	841

# TYPICAL FLOOR PLAN

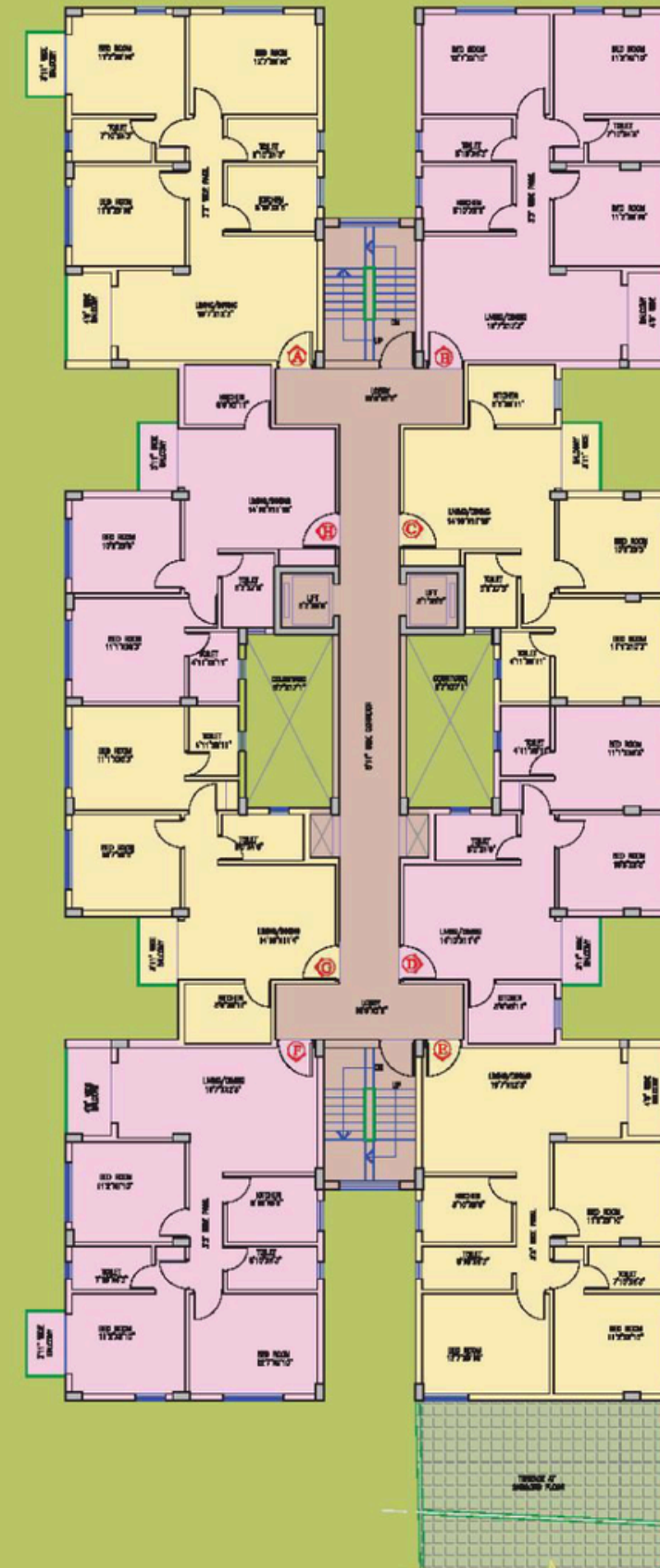
BLOCK 3 | ▼ N



BLOCK	FLAT No.	BHK	Built Up Area
3	A	3BHK	894
	B	3BHK	868
	C	2BHK	639
	D	2BHK	629
	E	3BHK	868
	F	3BHK	894
	G	2BHK	629
	H	2BHK	639

# TYPICAL FLOOR PLAN

BLOCK 4 | ▼ N



BLOCK	FLAT No.	BHK	Built Up Area
4	A	3BHK	923
	B	3BHK	897
	C	2BHK	657
	D	2BHK	646
	E	3BHK	897
	F	3BHK	923
	G	2BHK	646
	H	2BHK	657